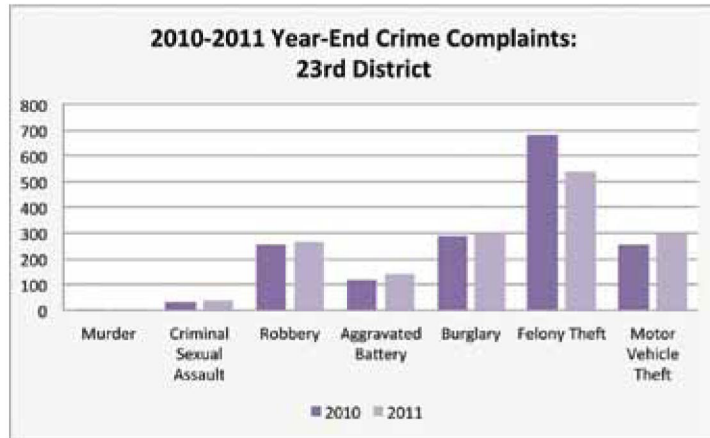


2010-2011 Year-End Crime Complaints
 The following data were compiled under the new measurement system.

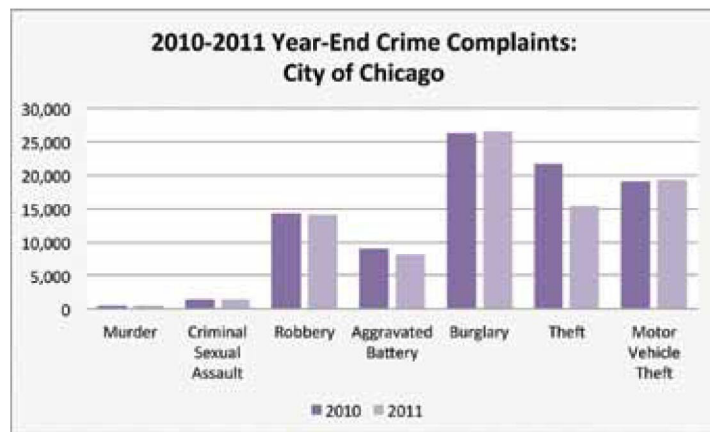
23rd District	2010	2011	Percent Change
Murder	5	4	-20.0%
Criminal Sexual Assault	33	39	18.2%
Robbery	252	268	6.3%
Aggravated Battery	118	138	16.9%
Burglary	287	300	4.5%
Felony Theft	683	538	-21.2%
Motor Vehicle Theft	255	302	18.4%
Total	1,633	1,589	-2.7%

All Chicago	2010	2011	Percent Change
Murder	436	433	-0.7%
Criminal Sexual Assault	1,429	1,464	2.4%
Robbery	14,270	13,997	-1.9%
Aggravated Battery	9,015	8,111	-10.0%
Burglary	26,383	26,456	0.3%
Theft	21,759	15,377	-29.3%
Motor Vehicle Theft	18,998	19,345	1.8%
Total	92,290	85,183	-7.7%

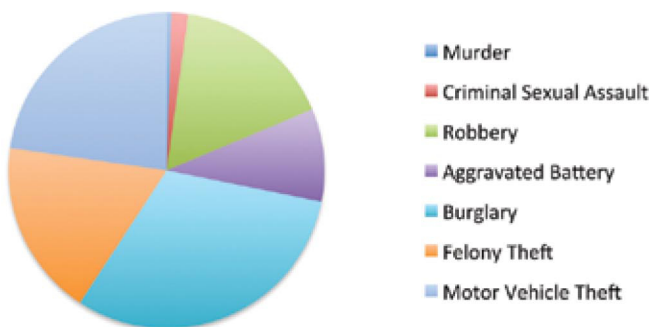
Year-End crime complaints as compiled by the Chicago Police Department's Office of News and Affairs. The CPD altered in mid-to late-2011 how it measures and tracks crime.



A comparison of 2010 and 2011 reported crimes, by category. Source: The Chicago Police Department's Office of News and Affairs.



2011 Year-End Crime Complaints: City of Chicago



Types of crimes committed, by percentage. Source: The Chicago Police Department's Office of News and Affairs.

2011 Year-End Crime Complaints: 23rd District

