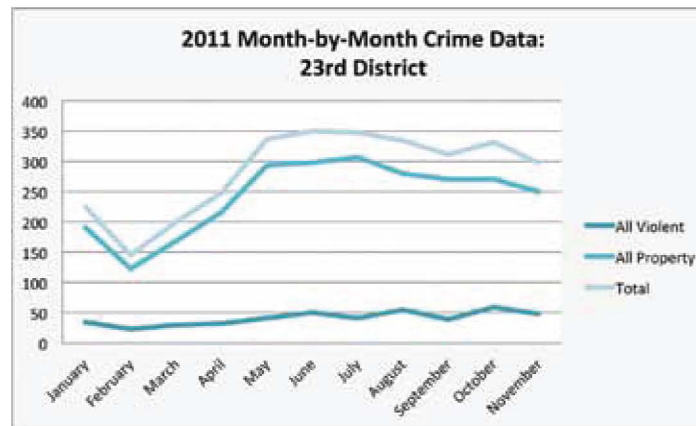


2011 Month-by-Month Crime Data: City of Chicago													
Crime	January	February	March	April	May	June	July	August	September	October	November		
Murder	28	24	21	30	36	46	54	36	39	44	42		
Criminal Sexual Assault	114	108	105	110	139	124	134	138	126	131	116		
Robbery	1,096	748	949	1,009	1,244	1,185	1,277	1,327	1,274	1,425	1,228		
Assault & Battery	855	697	1,028	1,153	1,236	1,310	1,476	1,235	1,077	1,184	909		
Burglary	1,888	1,407	1,821	2,021	2,442	2,418	2,374	2,611	2,521	2,445	2,317		
Theft	4,838	4,115	5,448	5,670	6,387	6,831	7,158	7,233	6,542	6,595	6,078		
Motor Vehicle Theft	1,850	1,287	1,635	1,719	1,800	1,814	1,771	1,544	1,450	1,487	1,481		
Arson	40	20	51	56	55	33	46	42	37	50	34		
All Violent	2,093	1,577	2,103	2,302	2,655	2,665	2,941	2,736	2,516	2,784	2,295		
All Property	8,616	6,829	8,955	9,466	10,684	11,096	11,349	11,430	10,550	10,577	9,910		
Total	10,709	8,406	11,058	11,768	13,339	13,761	14,290	14,166	13,066	13,361	12,205		

A month-by-month breakdown of crimes reported between January and November 2011. Source: The Chicago Police Department's 2011 Index Crime Summaries.

2011 Month-by-Month Crime Data: 23rd District													
Crime	January	February	March	April	May	June	July	August	September	October	November		
Murder	1	0	0	0	0	0	0	0	2	0	0		
Criminal Sexual Assault	4	1	2	2	7	4	0	7	3	0	3		
Robbery	21	10	19	17	20	30	20	27	22	38	25		
Assault & Battery	9	11	10	14	15	17	21	20	15	22	21		
Burglary	22	12	15	12	38	44	34	20	30	19	27		
Theft	147	99	136	168	222	234	247	230	213	224	198		
Motor Vehicle Theft	21	12	18	36	34	21	27	29	28	28	25		
Arson	1	0	0	0	0	0	0	0	0	1	0		
All Violent	35	22	31	33	42	51	41	56	40	60	49		
All Property	191	123	169	216	294	299	308	279	271	272	250		
Total	226	145	200	249	336	350	349	335	311	332	299		

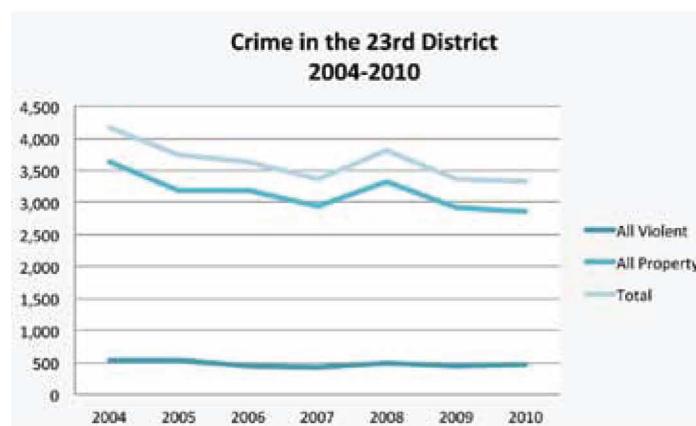
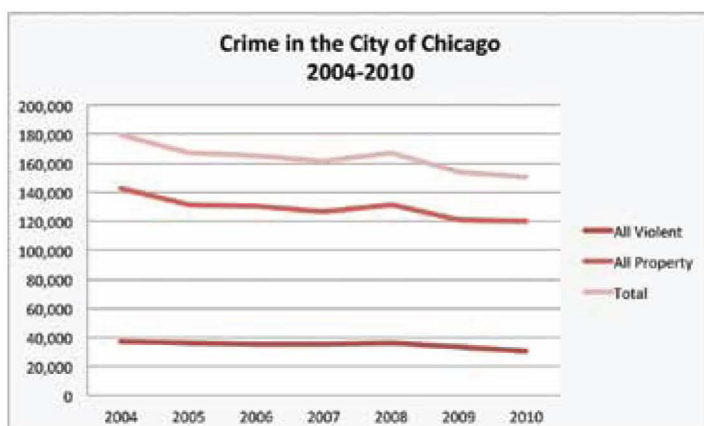


A visualization of month-by-month crime data from January to November 2011. Source: The Chicago Police Department's 2011 Index Crime Summaries.

2004-2010 Yearly Crime Data: City of Chicago							
Citywide	2004	2005	2006	2007	2008	2009	2010
Murder	448	447	467	443	510	458	436
Criminal Sexual Assault	1,757	1,618	1,521	1,593	1,569	1,443	1,359
Robbery	15,965	15,961	15,860	15,412	16,652	15,867	14,205
Assault & Battery	18,820	17,934	17,442	17,414	17,033	15,718	14,393
Burglary	24,542	25,298	24,114	24,719	26,036	26,456	26,140
Theft	94,651	83,235	83,433	82,418	86,017	78,209	74,561
Motor Vehicle Theft	22,788	22,491	21,824	18,567	18,973	15,472	19,016
Arson	772	683	716	705	637	610	516
All Violent	36,990	35,960	35,290	34,862	35,764	33,486	30,393
All Property	142,753	131,707	130,087	126,409	131,663	120,747	120,233
Total	179,743	167,667	165,377	161,271	167,427	154,233	150,626

2004-2010 Yearly Crime Data: 23rd District							
Crime	2004	2005	2006	2007	2008	2009	2010
Murder	4	2	3	11	2	1	5
Criminal Sexual Assault	33	31	35	21	31	43	35
Robbery	314	305	237	232	275	252	252
Assault & Battery	177	206	170	163	187	148	175
Burglary	505	499	437	381	440	330	284
Theft	2,758	2,376	2,442	2,308	2,610	2,368	2,320
Motor Vehicle Theft	365	312	294	252	267	223	254
Arson	7	12	11	6	2	2	1
All Violent	528	544	445	427	495	444	467
All Property	3,635	3,199	3,184	2,947	3,319	2,923	2,859
Total	4,163	3,743	3,629	3,374	3,814	3,367	3,326

A tally of crimes reported between 2004-2010; data reflects year-end totals. Source: The Chicago Police Department's 2011 Index Crime Summaries.



Crime trends from 2004 to 2010; data reflects year-end totals. Source: The Chicago Police Department's 2011 Index Crime Summaries.