



This quiet corner of Bronzeville is ready to introduce a new take on Chicago's traditional courtyard building. Its young residents will have a stable, supportive housing opportunity that connects them with the surrounding community.

Residents pass through a secured gate and reach their private entry doors by traversing a wide courtyard. Shared gardens, pavers and permeable groundcover offer unique backdrops for daily interaction and weekend gatherings. Deep, covered breezeways connect residents with their neighbors at a

more intimate scale, while also providing a small porch space.

Within each unit, generous ceilings draw light deep into each tiny home, and operable windows facilitate natural ventilation. The additional height also creates a small storage loft above the bathroom, accessible via built-in modular storage units that double as an improvised staircase. The bedroom is screened from the living space by a semi-transparent shelving unit that has been custom-designed for this tiny home, and flips down to provide a countertop. Durability and

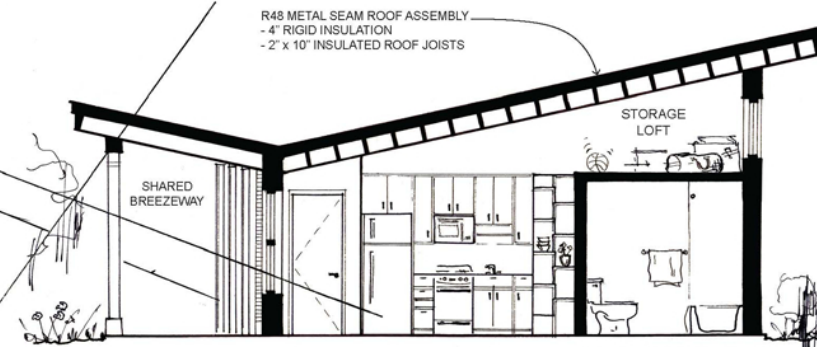
function are prioritized - everyday materials are cleverly crafted into useful forms, and the high degree of flexibility allows each resident to personalize their own home.

Personal and unique, safe and familiar - this is the kind of home we all deserve. Nobody should be relegated to living in an architectural experiment. Durable materials and time-tested design to provide a living space worth coming home to.

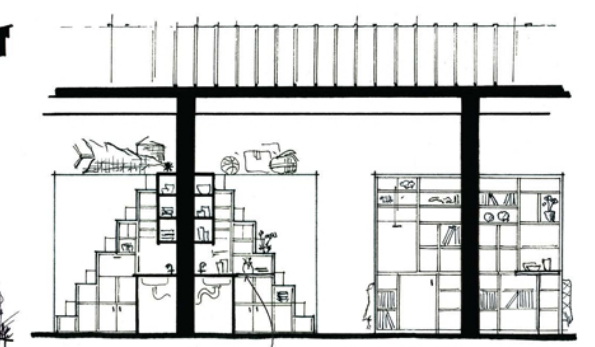
These homes equip each resident with the foundation for success, as they make another step towards full independence.

#### ESTIMATED MATERIAL COSTS

EXTERIOR WALLS .....	\$2,735
ROOFING .....	\$3,640
WINDOWS + DOORS .....	\$1,700
INTERIOR ROUGH FRAMING .....	\$1,135
PLUMBING + ELECTRICAL .....	\$760
INTERIOR FINISHES .....	\$4,550
KITCHEN & BATH .....	\$4,150
<b>COST PER TINY HOME .....</b>	<b>\$18,670</b>

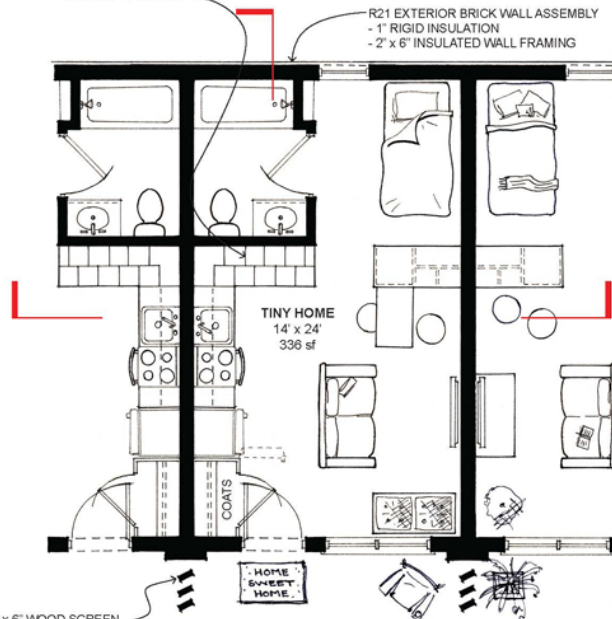


Typical Unit Section



Typical Unit Cross-Section

this is a **home**  
for  
**LIVING**  
in.



2" x 6" WOOD SCREEN  
TREATED WOOD POSTS ON CONCRETE BASES

EXPOSED WOOD JOISTS  
WOOD ACCENTS AT DOOR AND WINDOW HEADERS

Typical Unit Plan



Typical Unit Entry Elevation

